

- Priority Habitats of Rare Species
- Areas of Critical Environmental Concern
- Stream
- Wetland
- Open Water
- Major Road
- Minor Road
- Local Road
- Parcels
- Buildings

Areas of Critical Environmental Concern - <https://www.mass.gov/service-details/acec-program-overview>

Priority Habitats of Rare Species - <https://www.mass.gov/ma-endangered-species-act-mesa-regulatory-review>

Stream - <https://www.mass.gov/guides/rivers-protection-act-questions-answers>

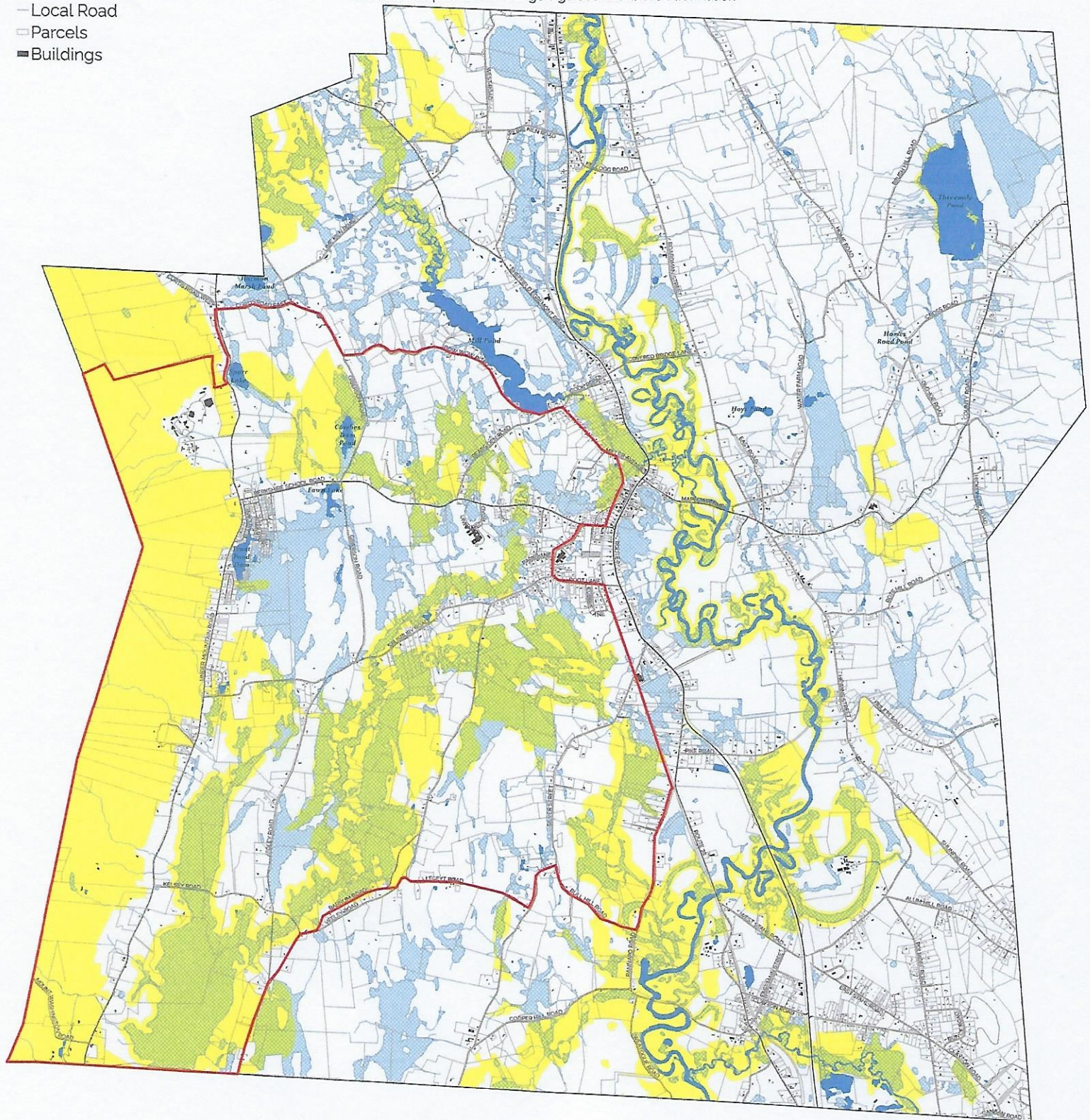
Wetland - <https://www.mass.gov/guides/wetlands-information>

Natural Resources

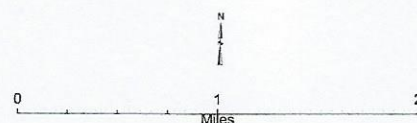
Town of Sheffield

www.sheffieldma.gov

www.axisgis.com/SheffieldMA



November 16, 2021



This map was created by the Berkshire Regional Planning Commission and is intended for general planning purposes only. This map shall not be used for engineering, survey, legal, or regulatory purposes. MassGIS, MassDOT, BRPC or the municipality may have supplied portions of this data.

- Public Water Supply
- Certified Vernal Pools
- Stream
- Wetland
- Open Water
- FEMA 100-year Floodplain
- Aquifers
- Major Road
- Minor Road
- Local Road
- Parcels
- Buildings

Public Water Supply – <https://www.mass.gov/service-details/guidelines-for-public-water-systems>

Certified Vernal Pools – <https://www.mass.gov/service-details/vernal-pool-protection>

Stream – <https://www.mass.gov/doc/about-the-massachusetts-rivers-protection-act/download>

Wetland – <https://www.mass.gov/guides/protecting-wetlands-in-massachusetts>

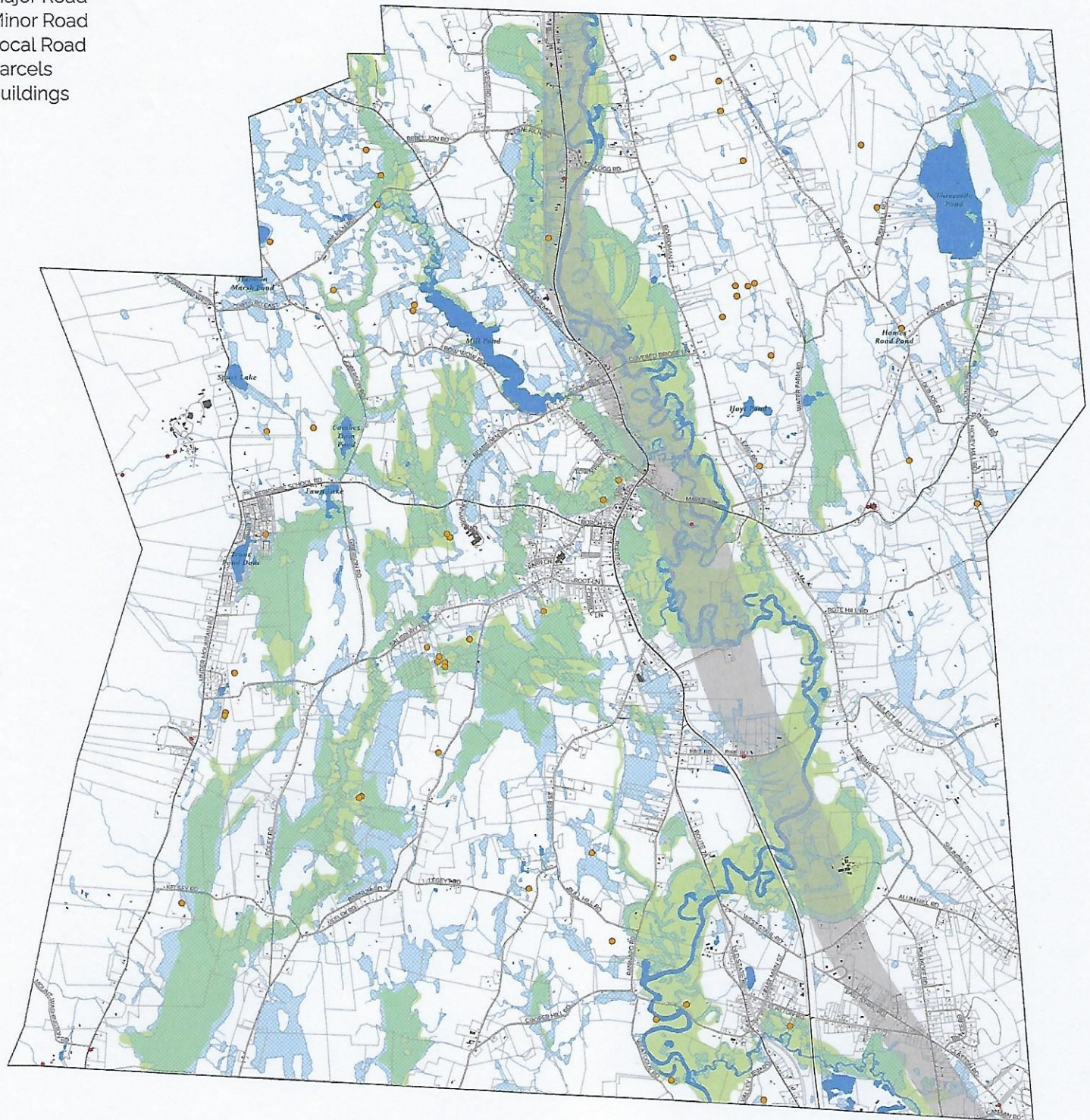
FEMA 100-year Floodplain – <https://www.fema.gov/floodplain-management>

Water Resources

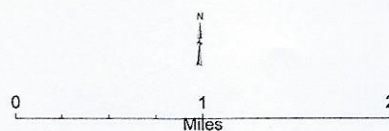
Town of Sheffield

www.sheffieldma.gov

www.axisgis.com/SheffieldMA



November 16, 2021



This map was created by the Berkshire Regional Planning Commission and is intended for general planning purposes only. This map shall not be used for engineering, survey, legal, or regulatory purposes. MassGIS, MassDOT, BRPC or the municipality may have supplied portions of this data.